



GUMEN INDUSTRIAL FURNACE & MACHINE

* BOGIE HEARTH TYPE FURNACE



LOADING CAPACITY : 100 Ton
USEFUL DIM. : 7m x 7m x 16m
WORKING TEMP. : 1100°C
HEATING : NG - DIRECT FIRING
BURNER POWER : 5440 kW



GUMEN MAKİNA SAN.TIC.LTD.STİ.

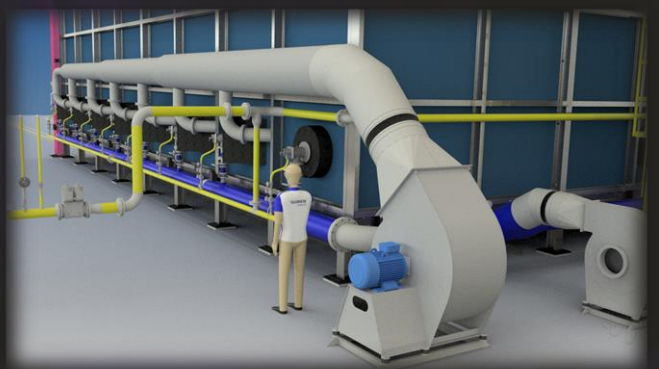
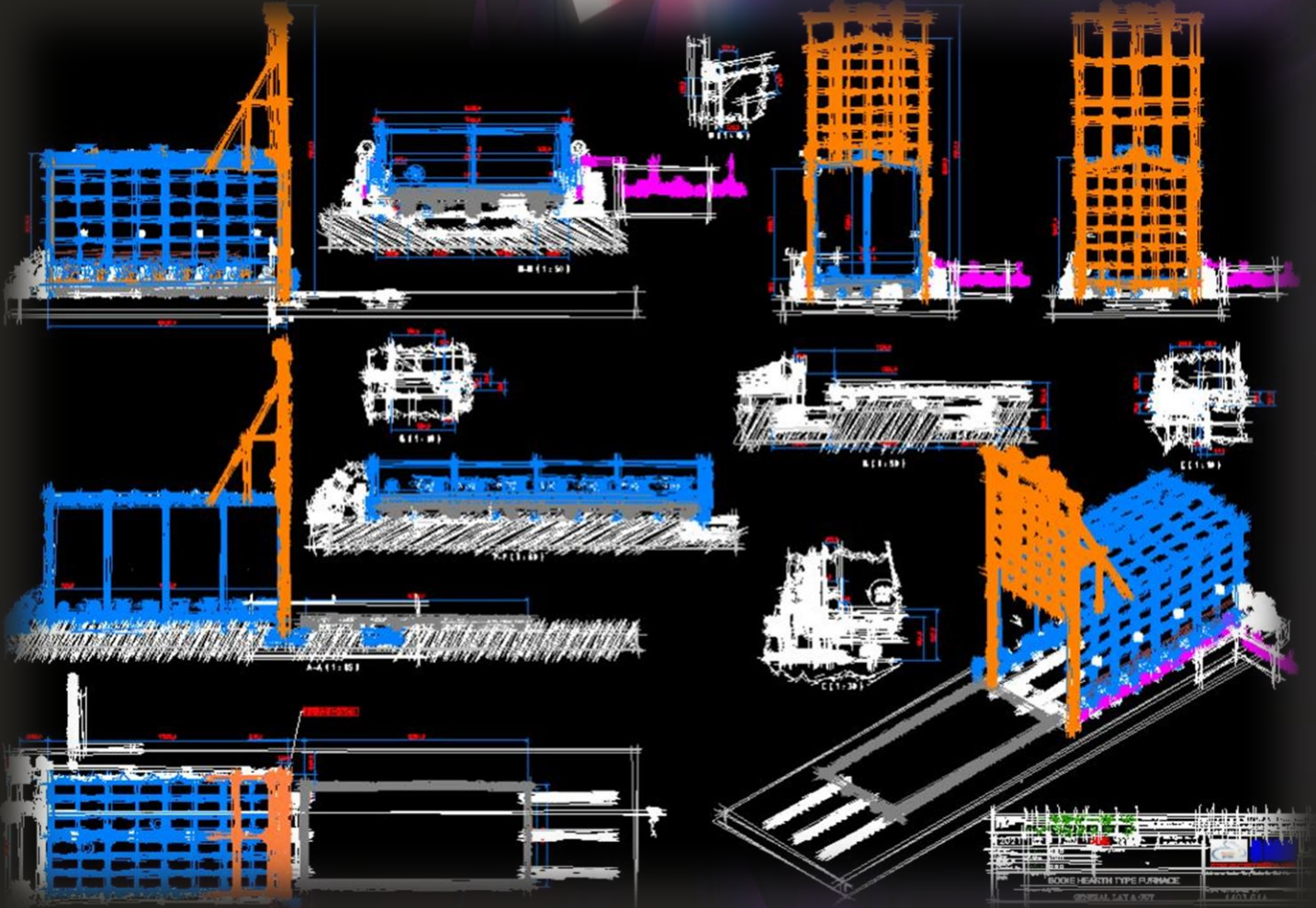
OFİS : TEL +90 (212) 603 9007 - FAX +90 (212) 603 9008 -
Şeker Pınar Mah. Göktürk Sok. (S.S. Marmara Geri D. Koop.) No:36/A
P.K. 41435 / ÇAYIROVA - KOCAELİ - TÜRKİYE
info@gumenmakina.com - www.gumenmakina.com



GUMEN INDUSTRIAL FURNACE & MACHINE

* BOGIE HEARTH TYPE FURNACE

- ❑ Gas or electrically heated.
- ❑ Direct or indirect heating.
- ❑ Moduler design for flexibility and easy transportation.
- ❑ Self or central recuperative combustion system and pressure control in the furnace for high energy efficiency.



GUMEN MAKİNA SAN.TIC.LTD.STİ.

OFİS : TEL +90 (212) 603 9007 - FAX +90 (212) 603 9008 -
Şeker Pınar Mah. Göktürk Sok. (S.S. Marmara Geri D. Koop.) No:36/A
P.K. 41435 / ÇAYIROVA - KOCAELİ - TÜRKİYE
info@gumenmakina.com - www.gumenmakina.com